

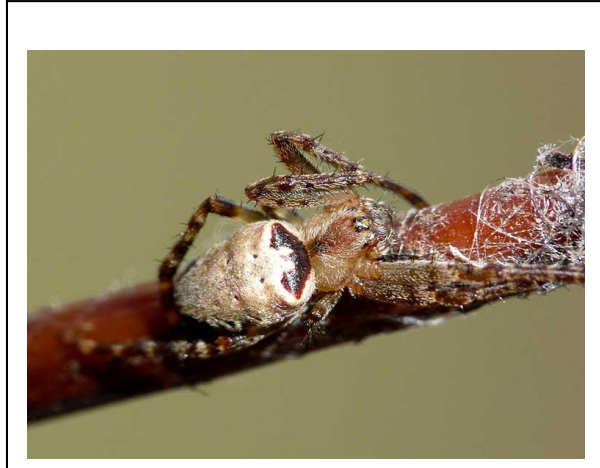
**Taxonomy:**

Order: Araneae

Family: Araneidae

Genus: *Plebs***Species:** *ebernus***Geographical distribution:**

South-eastern Australia (Adelaide to Cairns)

**Capture location (GPS) and date:** University of New South Wales (UNSW), Kensington (Sydney) Campus, 33.9173° S, 151.2313° E**Collector name and affiliation:** Sean J Blamires, UNSW**Available in a collection (Vouchere)?:** No**Silk type: Major Ampullate Silk - Maximum supercontracted** **$\alpha^*$  parameter: 0.13**

True stress at breaking (MPa): ~ 552

True strain at breaking: ~ 0.71

